

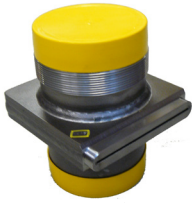


# TONISCO® Hot Tapping Valves

DN 125 - DN 250, PN 25  
DATA SHEET



## Description and Features



**TONISCO® Hot Tapping Valve**  
1624.1250



**TONISCO® Hot Tapping Valve**  
1624.1500 - 1624.2500

TONISCO® Hot Tapping Valves are designed to create new branches to weldable district heating and cooling lines and to pipelines in process plants while the network is operating. A sluice plate acts as a temporary closing mechanism in order to remove the drilling device after the hot tapping and to connect the new branch.

### Main Features:

- Perfect for underground installations as the valve becomes a "piece of pipe" after the groove of the sluice plate has been welded
- Very low weight results in an easy handling on side
- Very short valve length for narrow sides



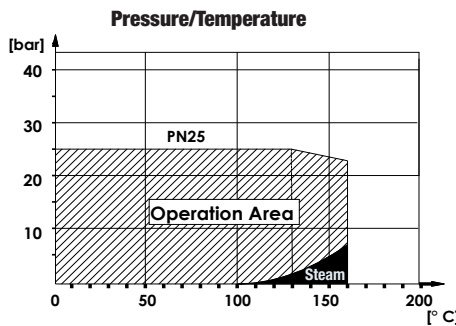
**Welding Ring**  
1627.1250-1627.2500



**Sluice Plate**  
1625.1250-1625.2500



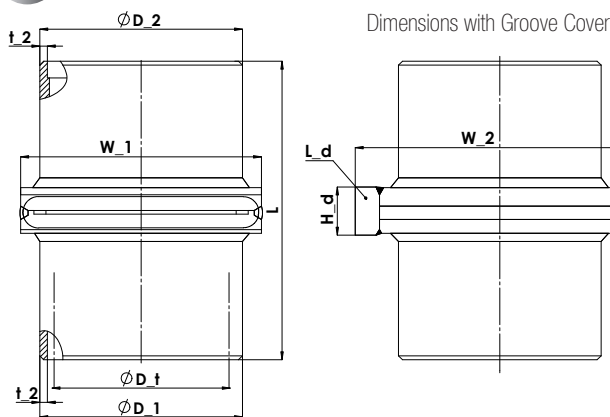
**Groove Cover**  
1624.1250Z-1624.2500Z



## Specifications

1.	TONISCO Hot Tapping Valve
Sizes	DN 125 (5") - DN 250 (10")
Drilling Valve Type	Full Bore
Product Number	1624.1250 - 1624.2500
Material Specifications	Structural Steel S355J2 according EN 10025, Pressure Vessel Steel P235GH according EN 10028
Sealing Material	EPDM
Nominal Pressure	PN 25
Max. Operating Temperature	160 °C
Area of Use	Weldable District Heating and Cooling Lines, Weldable Lines in Process Plants
Applicable Fluids	Hot or cold water
2.	Welding / Branch Reinforcement Ring *
Sizes	DN 125 (5") - DN 250 (10")
Product Number	1627.1250-1627.2500
Material Specification	Pressure Vessel Steel P235GH according EN 10028
3	Sluice Plate **
Sizes	DN 125 (5") - DN 250 (10")
Product Number	1625.1250-1625.2500
Material Specification	AISI 1074, W.-Nr. 1.1248
4	Groove Cover
Sizes	DN 125 (5") - DN 250 (10")
Product Number	1624.1250Z-1624.2500Z
Material Specification	Structural Steel S355J2 according EN 10025

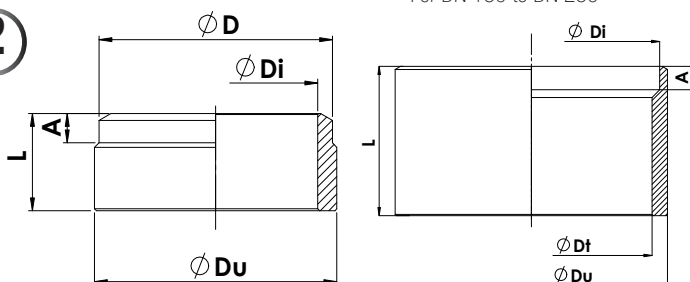
1



For DN 125

For DN 150 to DN 250

2



DN	Ø D_1 [mm]	t_1 [mm]	Ø D_2 [mm]	t_2 [mm]	L [mm]	Ø D_t [mm]	W_1 [mm]	W_2 [mm]	H_d [mm]	L_d [mm]	Weight without sluice plate[kg]	Connection to drilling machine
125	139,7	6,3	139,7	6,3	218	125	180	195	40	195	8,5	right side outside thread
150	168,3	6,3	168,3	6,3	248	148	200	230	40	225	15	left side inside thread
200	219,1	6,3	219,1	6,3	288	200	268	285	50	285	25	left side inside thread
250	273	6,3	273	6,3	288	242	332	355	50	350	37,5	clamp connection

\*A reinforcement of the branch might be necessary in addition to the TONISCO Valve, depending on the size of the main line, system pressure, system temperature etc.. The piping planner has to decide whether a nozzle reinforcement is necessary or not.

\*\* The sluice plate should not stay in the pipeline network for longer than 2 weeks. It is recommended to reduce the system pressure during the operation to maximum 12 bar.

DN	Ø D [mm]	Ø Di [mm]	Ø Du	L [mm]	A [mm]	Weight [kg]
125	139,7	127,1	150	80	15	3

DN	Ø Du [mm]	Ø Di [mm]	Ø Dt	L [mm]	A [mm]	Weight [kg]
150	168,3	155,7	148,3	100	20	4
200	219,1	206,5	194,1	120	20	7
250	273	260,4	248	160	20	12